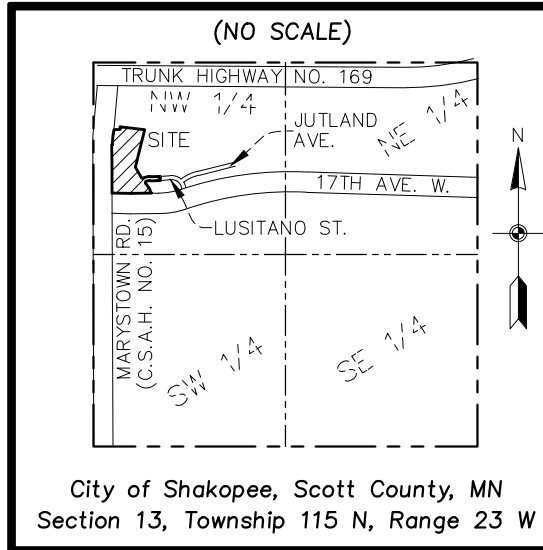


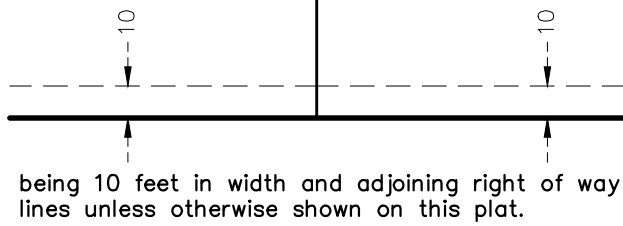
POWERS FIRST ADDITION

VICINITY MAP

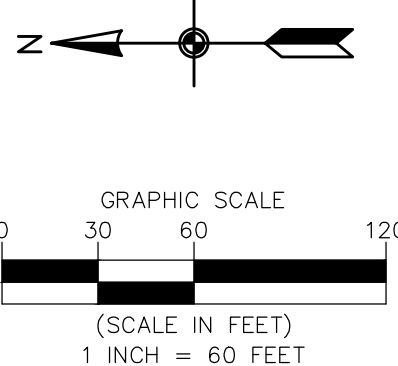


City of Shakopee, Scott County, MN
Section 13, Township 115 N, Range 23 W

DRAINAGE AND UTILITY
EASEMENTS ARE SHOWN THUS
(NOT TO SCALE)

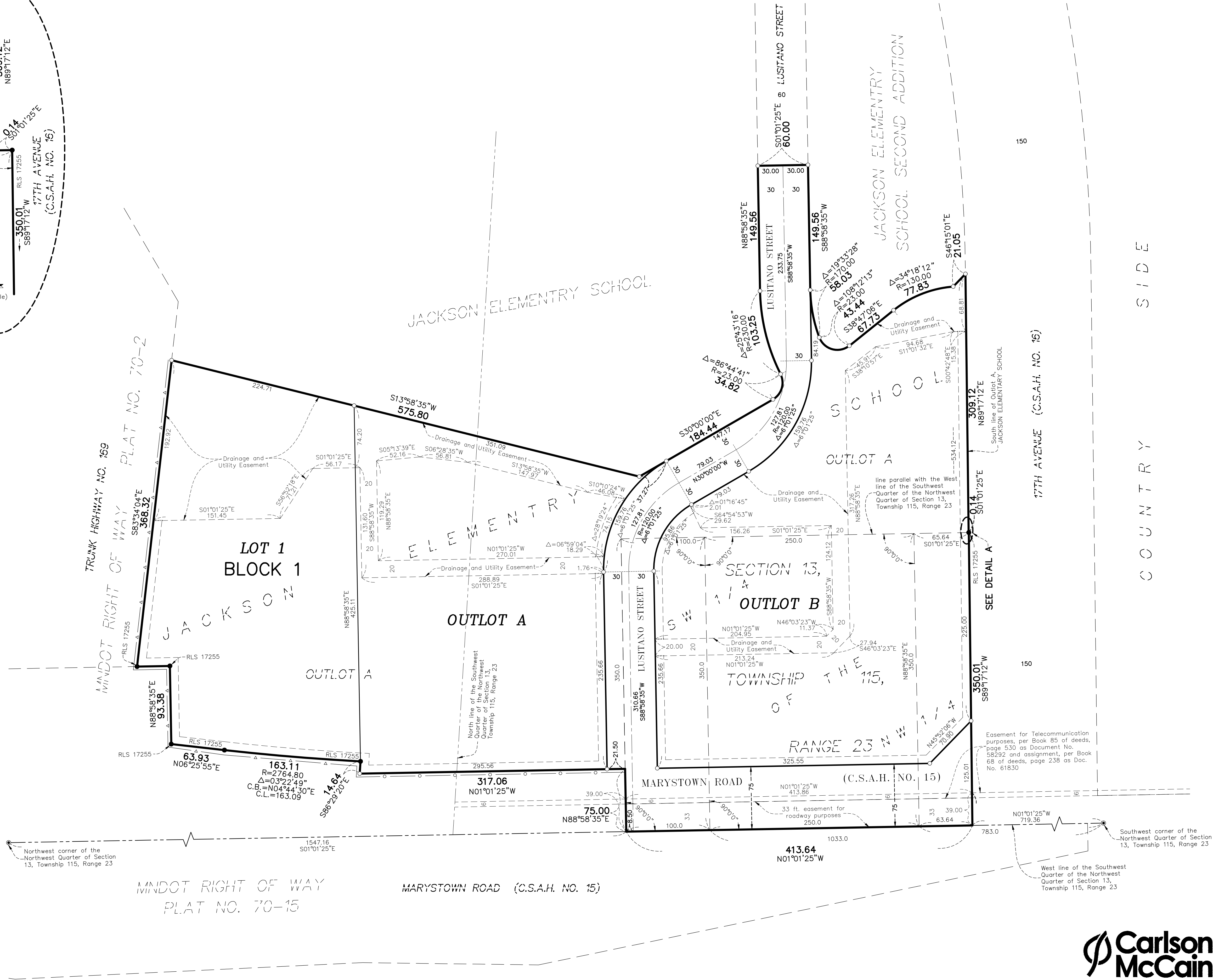
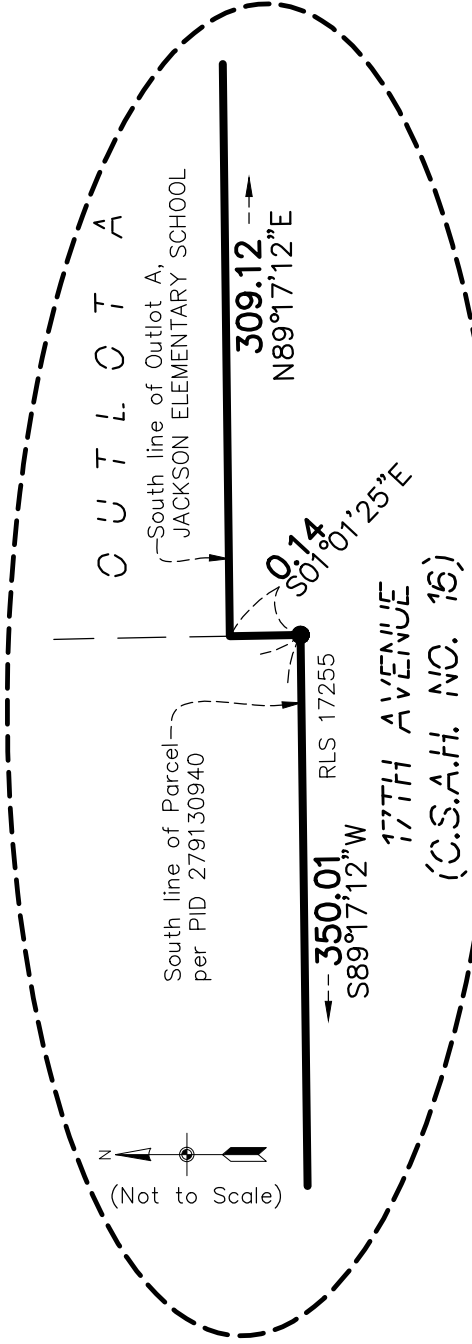


- Denotes Scott County Section Corner Monument, as noted
- Denotes found 5/8 in by 14 inch Rebar mark with license number 40361, unless otherwise noted
- Denotes 5/8 inch by 14 inch Rebar, set or to be set within one year of recording of this plat and marked with license number 40361



Orientation of this bearing system is based on the South line of Outlot A, JACKSON ELEMENTARY SCHOOL, which is assumed to have a bearing of North 89 degrees 17 minutes 12 seconds East.

DETAIL A



**Carlson
McCain**
ENVIRONMENTAL • ENGINEERING • SURVEYING